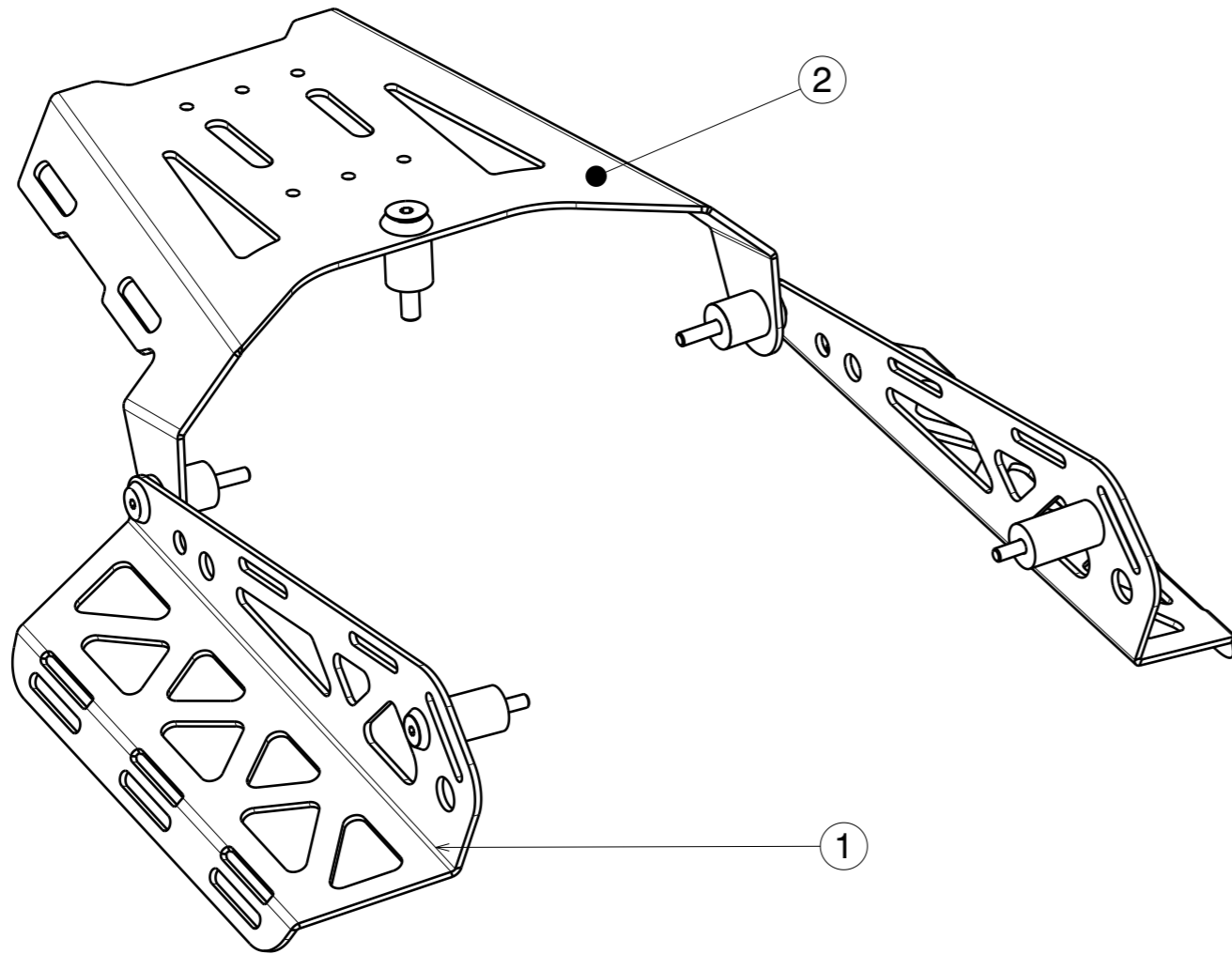
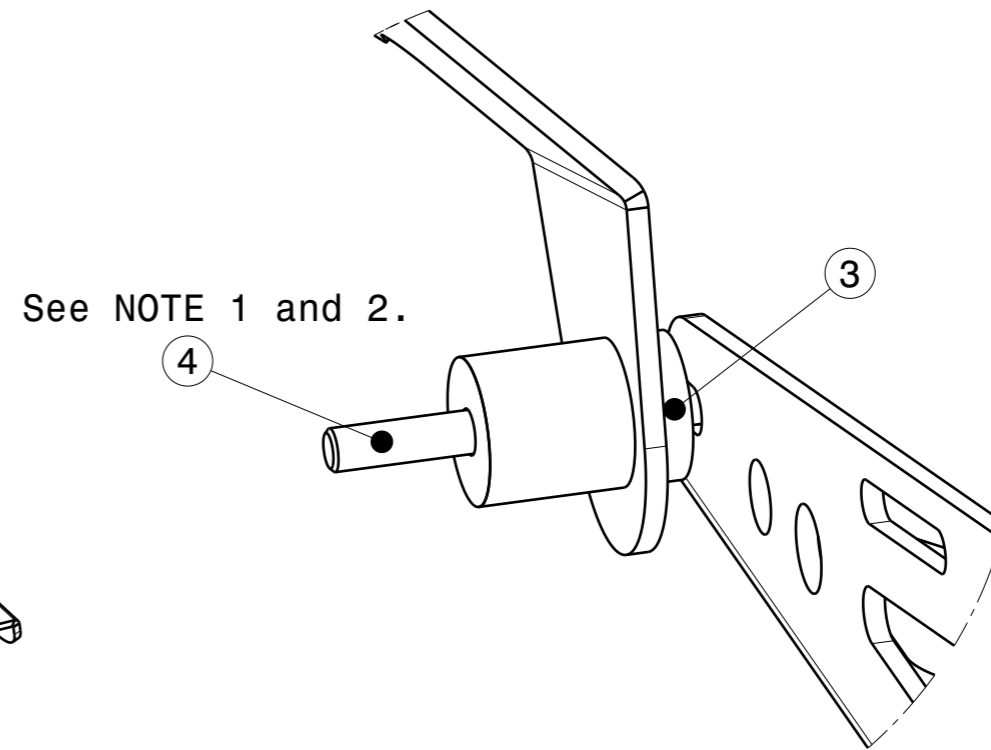


NOTES:

1. To be tightened according to Aprilia Tuareg 660 Workshop Manual.
2. Do not use Loctite or other thread locking compounds. Use copper grease.
3. Assembly sequence:
 - 3.1 Assemble Rear Rack
 - 3.2 Assemble Side Racks, replacing the Aft Spacer (from Side Rack kit) with the Spacer 5mm and the M6x5 screw with M6x55 screw. See Isometric view 2.



Isometric view
Scale: 1:3



Isometric view 2
Scale: 1:1

PART LIST

Description	Part Number	F/N	Qty
Side Racks	FGWX-05-A	1	1
Rear Rack	FGWX-04-A	2	1
Spacer 5mm	FGWX-06-A-001	3	2
Csk Screw M6x55	FGWX-04-A-002	4	2

SCALE 1:1		BREAK ALL EDGES (R ALT. 45°) 0.1-0.5 THREAD TOL. 6g/6H ISO R965/1 ALL DIM. INCLUDE SURFACE TREATMENT		GWORX	
ROUGH Ra μm -	FILLET RADII -	DIM TOL -	ANG TOL -	PROJECTION	
DATE -		DESCRIPTION Combo Racks			
DESIGN GWORX		-			
DRAWN GWORX		-			
MAT. -		SURF. TREATMENT -			
SIZE -	DOC.NO. FGWX-06-A	REV. -	SHEET 1 OF 1		