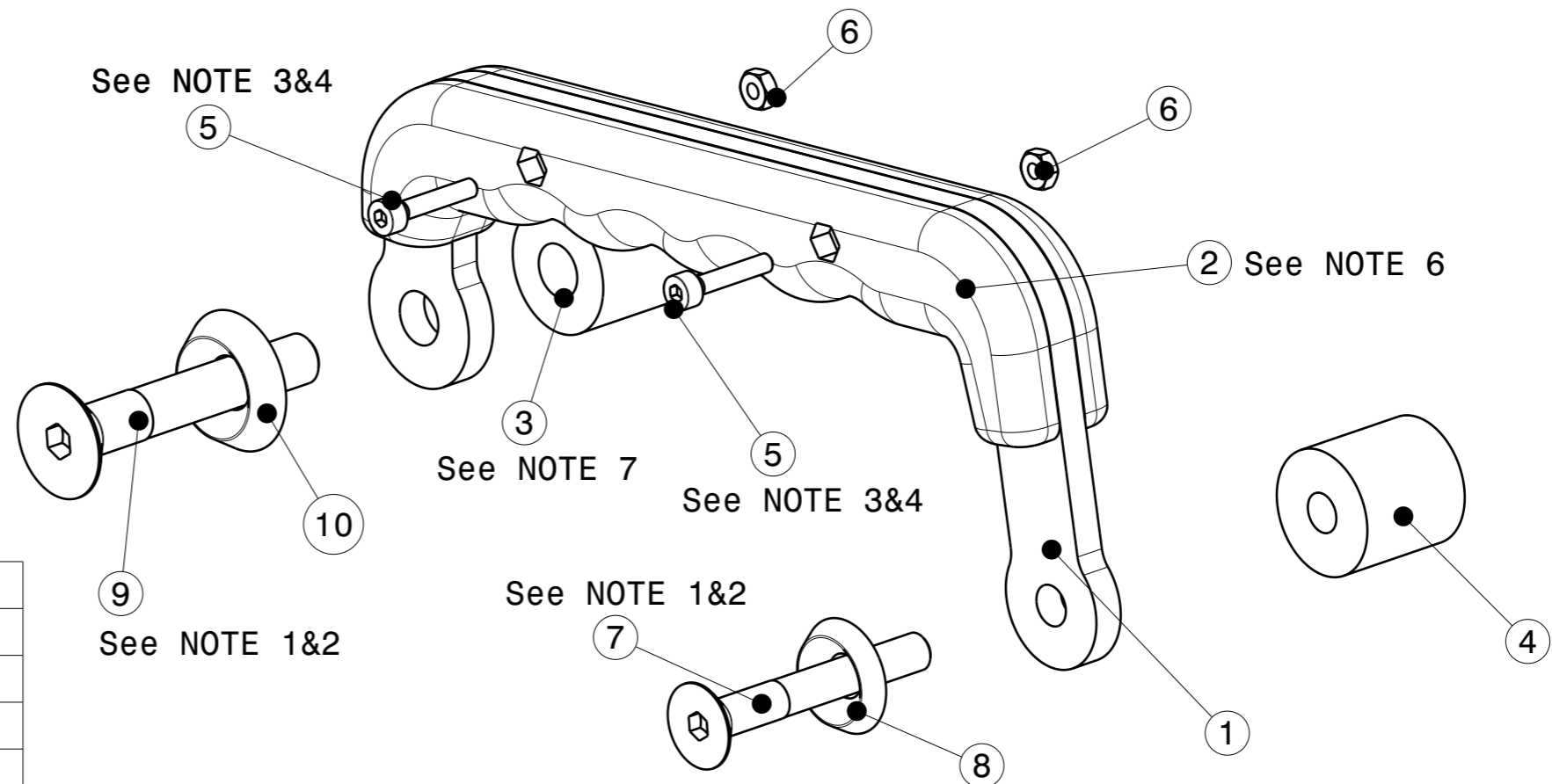


NOTES:

1. To be tightened according to Aprilia Tuareg 660 Workshop Manual.
2. Do not use Loctite or other thread locking compounds. Use copper grease.
3. Do not overtighten. Nominal tightening torque: $0.5 \pm 0.1 \text{Nm}$
4. Assembly sequence:
 - 4.1 Slide the handle on the Handle Structure, from the bottom.
 - 4.2 Insert M3 screws and nuts as shown. The nuts must be mounted on the saddle side.
 - 4.3 Position spacers, handles, washers and screws as shown.
 - 4.5 Tighten the M8 screw.
 - 4.6 Tighten the M6 screw.
5. Left handle shown, for the right handle all screws, washers and spacers to be positioned symmetrically.
6. The handles will be delivered pre-assembled, so 4.1 and 4.2 to be used only in case of disassembly and reassembly.
7. The length of the spacers foresees the use of the handles together with the Rear Rack. They can be used as they are also when the handles are used without the Rear Rack, but the Handle spacer will result slightly too long. It can be shortened by 4/5mm or some M6 washers can be added to the Side spacer.



Isometric view 1

| PART LIST | | | |
|------------------|---------------|-----|-----|
| Description | Part Number | F/N | Qty |
| Handle structure | FGWX-09-A-001 | 1 | 1 |
| Handle single | FGWX-09-A-004 | 2 | 1 |
| Handle spacer | FGWX-09-A-003 | 3 | 1 |
| Side spacer | FGWX-04-A-002 | 4 | 1 |
| Screw M3x16 | | 5 | 2 |
| Nut M3 | | 6 | 2 |
| Csk Screw M6x45 | | 7 | 1 |
| Csk Washer M6 | | 8 | 1 |
| Csk Screw M8x50 | | 9 | 1 |
| Csk Washer M8 | | 10 | 1 |

| | | | | | |
|---------------------------|-----------------------|--|--------------|--------------|--|
| SCALE 1:1 | | BREAK ALL EDGES (R ALT. 45°) 0.1-0.5 THREAD TOL. 6g/6H ISO R965/1 ALL DIM. INCLUDE SURFACE TREATMENT | | GWORX | |
| ROUGH Ra μm | FILLET RADI | DIM TOL | ANG TOL | PROJECTION | |
| DATE | DESCRIPTION Handle | | | | |
| DESIGN GWORX | - | | | | |
| DRAWN GWORX | - | | | | |
| MAT. | SURF. TREATMENT | | - | | |
| SIZE | DOC.NO. FGWX-09-A | REV. | SHEET 1 OF 1 | | |