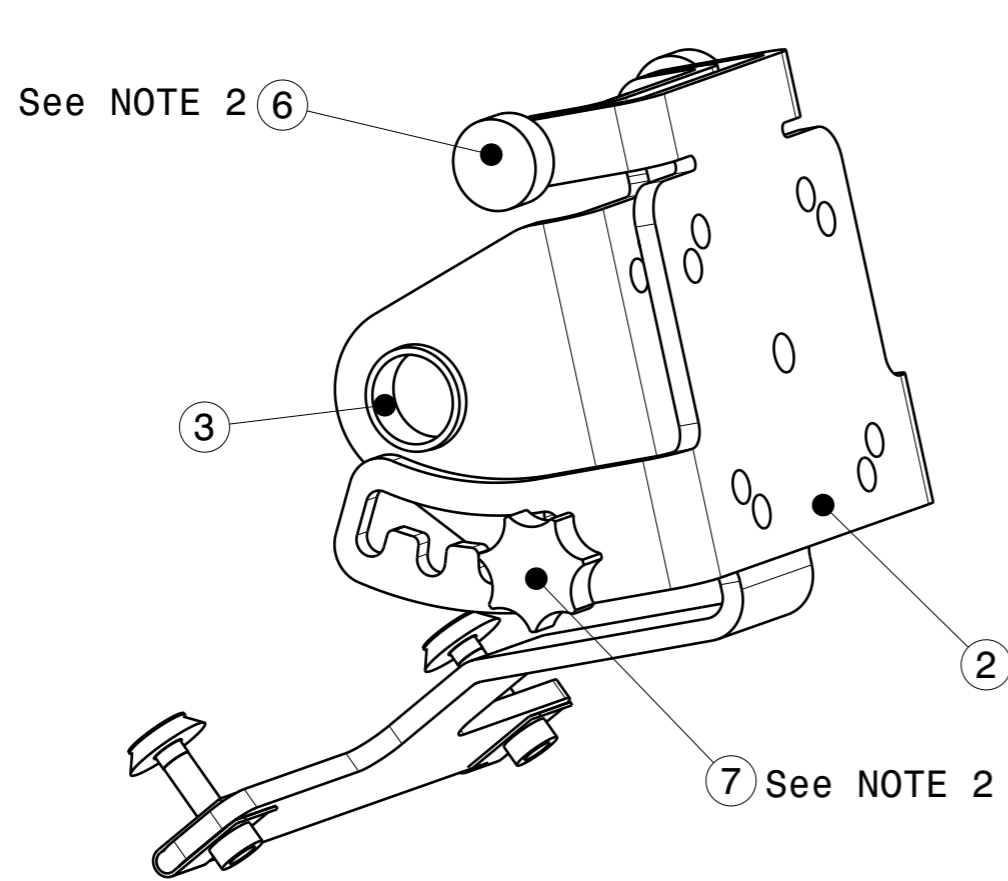
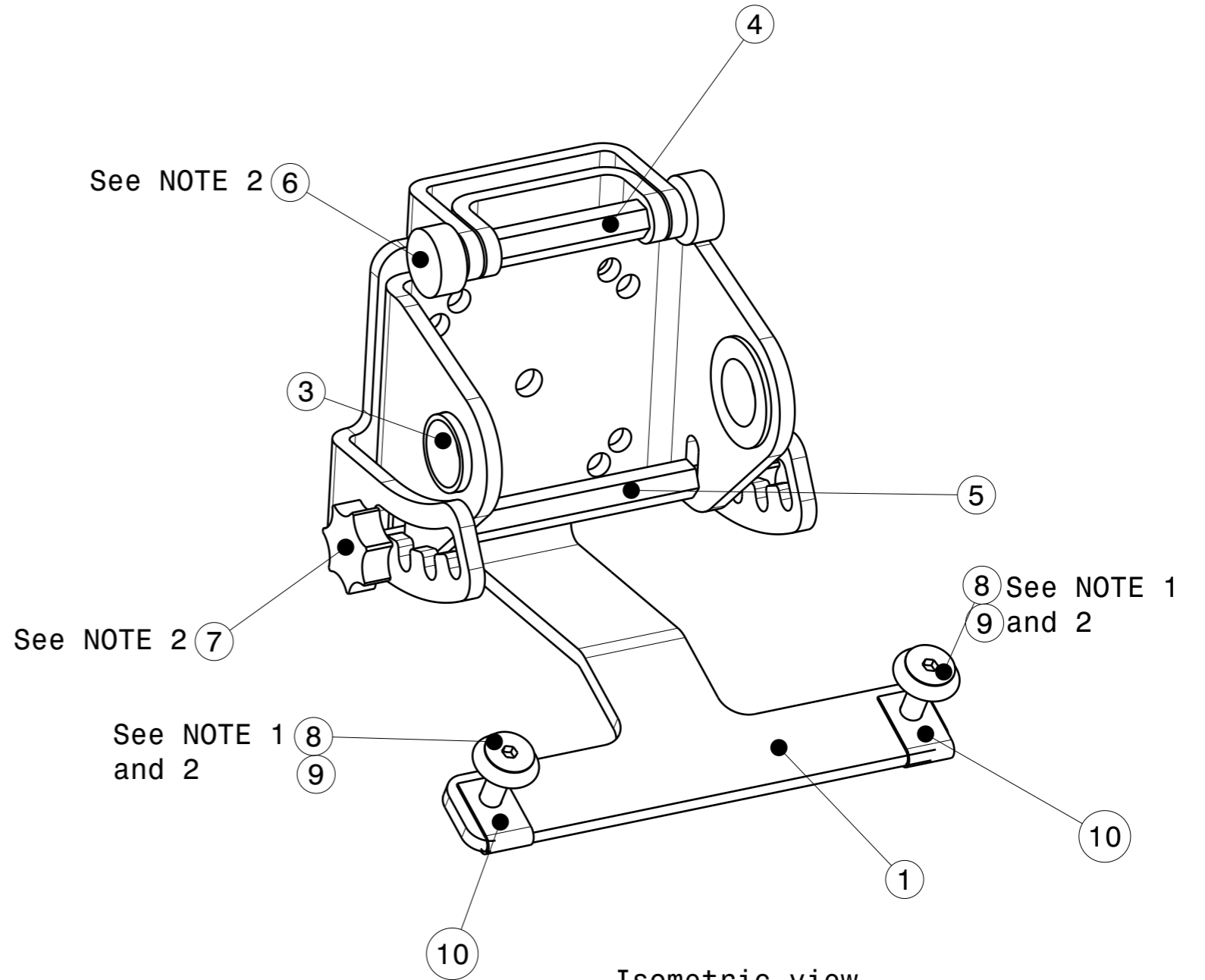


NOTES:

1. To be tightened to 2 Nm.
2. Do not use Loctite or other thread locking compounds. Use copper grease.



Isometric view
Scale: 1:1



Isometric view
Scale: 1:1

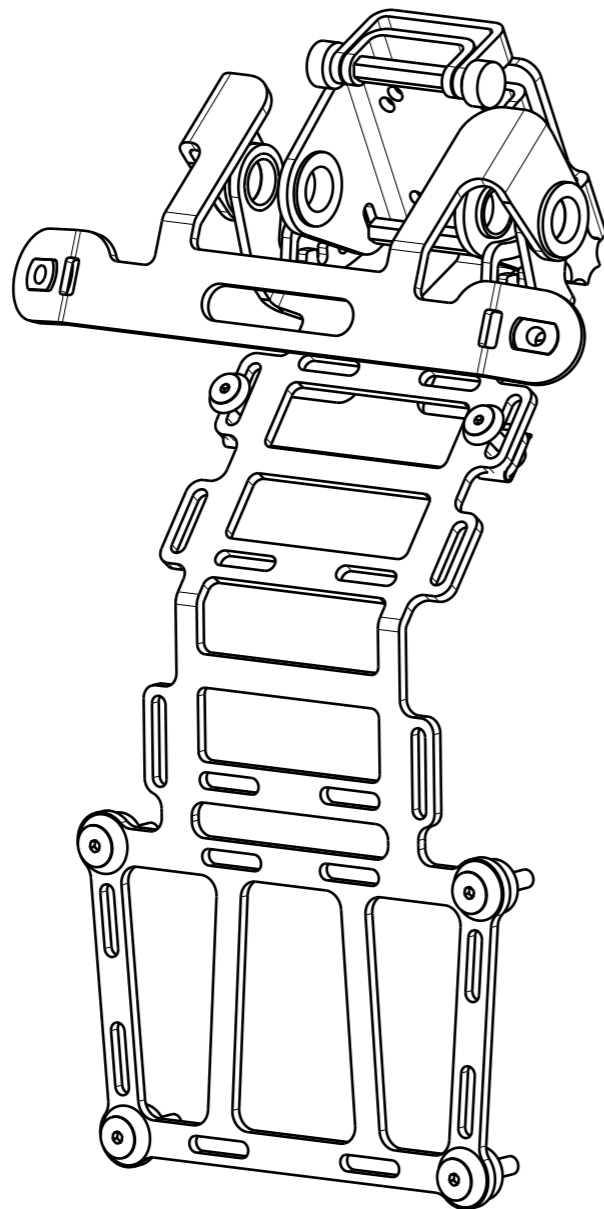
PART LIST

Description	Part Number	F/N	Qty
Nav Bar Bracket	FGWX-11-A-001	1	1
Adjustment Bracket	FGWX-11-A-002	2	1
Bushing POM		3	2
Spacer 30mm		4	1
Spacer 55mm		5	1
Thumb Screw Steel		6	2
Thumb Screw Plastic		7	2
Csk screw M4x16		8	2
Csk Washer M4		9	2
Clip Nut M4		10	2

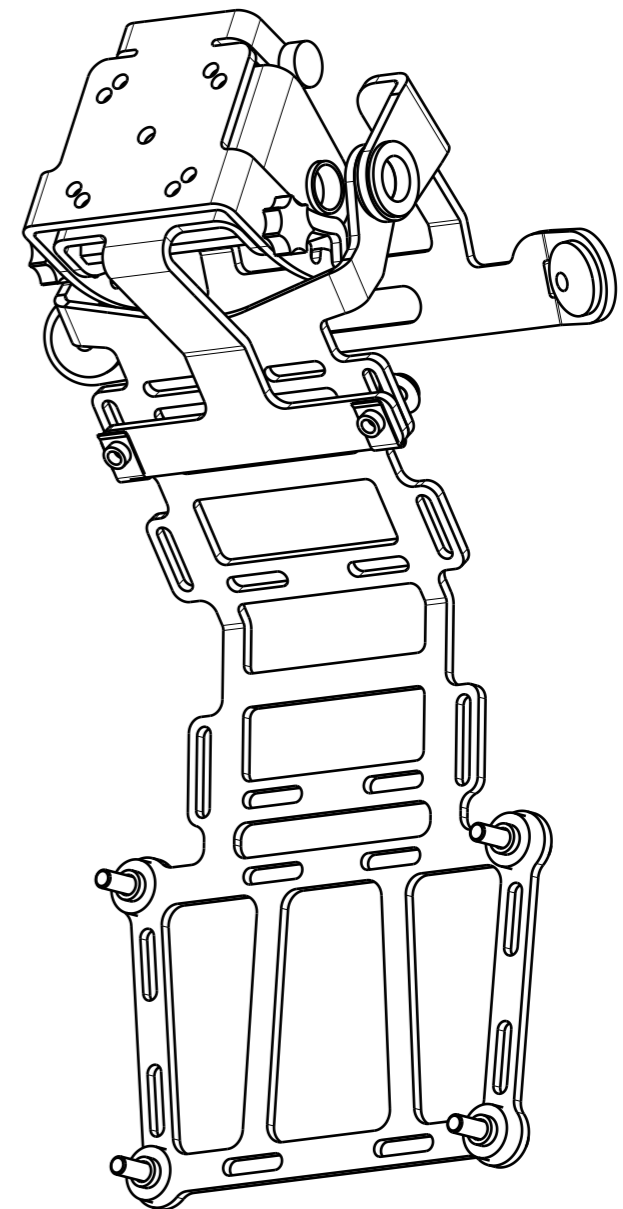
SCALE 1:1		BREAK ALL EDGES (R ALT. 45°) 0.1-0.5		GWORX	
		THREAD TOL. 6g/6H ISO R965/1			
		ALL DIM. INCLUDE SURFACE TREATMENT			
ROUGH Ra μm	FILLET RADII	DIM TOL	ANG TOL	PROJECTION	
DATE	DESCRIPTION				
DESIGN GWORX	Device Holder				
DRAWN GWORX					
MAT.	SURF. TREATMENT				
SIZE	DOC. NO. FGWX-11-A	REV.	SHEET 1 OF 2		

ASSEMBLY NOTES:

1. Insert 2x F/N 3 in F/N 2.
2. Position F/N 1, F/N 2 and F/N 4 as shown, then screw in 2x F/N 6 and torque them finger tight.
3. Position F/N 5 as shown, then screw in 2x F/N 7 and torque them finger tight.
4. Position 2x clip nuts F/N 10 as shown.
5. Remove the 12mm bar from the Tower.
6. Pre-assemble the Device Holder, the Front Rack and the Windscreen Hinge (if present) on the bar, as shown in Isometric view 3.
7. Mount the 12mm bar back in the Tower.
8. Fix the Front Rack in place as per dedicated instructions.
9. Insert 2x F/N 9 and F/N 10 as shown.
10. To adjust the angle of the Adjustment bracket:
undo the 4x thumb screws, lift the two lower thumb screws (solid to the 55mm spacer), position the Adjustment bracket as desired, release the two thumb screws and tighten them up. Tighten up also the upper thumb screws.



Isometric view 3
Scale: 1:2



Isometric view 4
Scale: 1:2