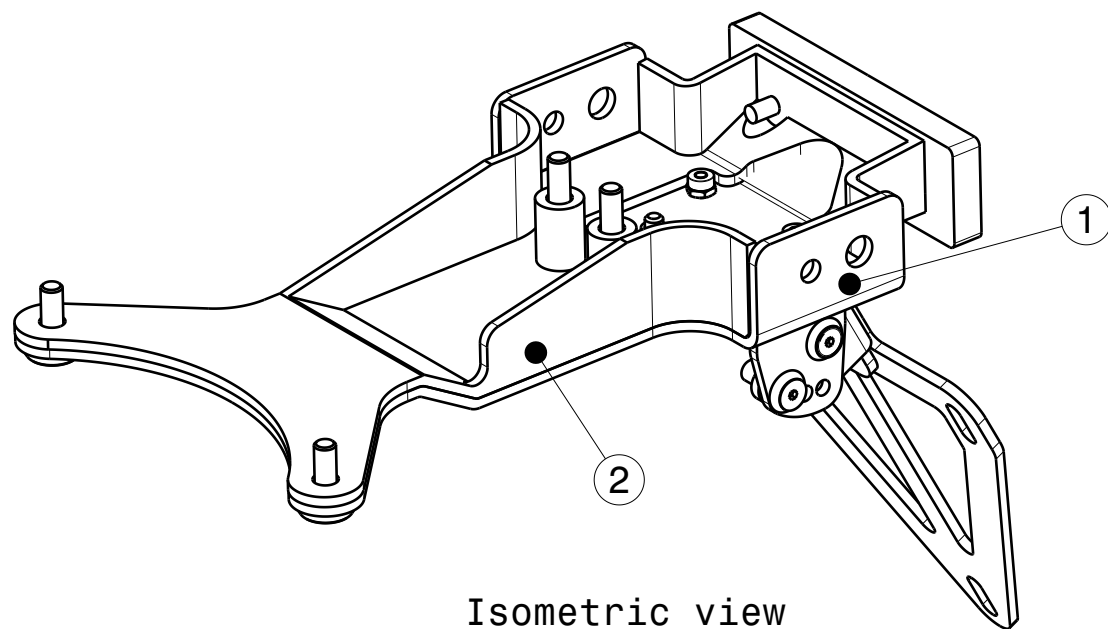
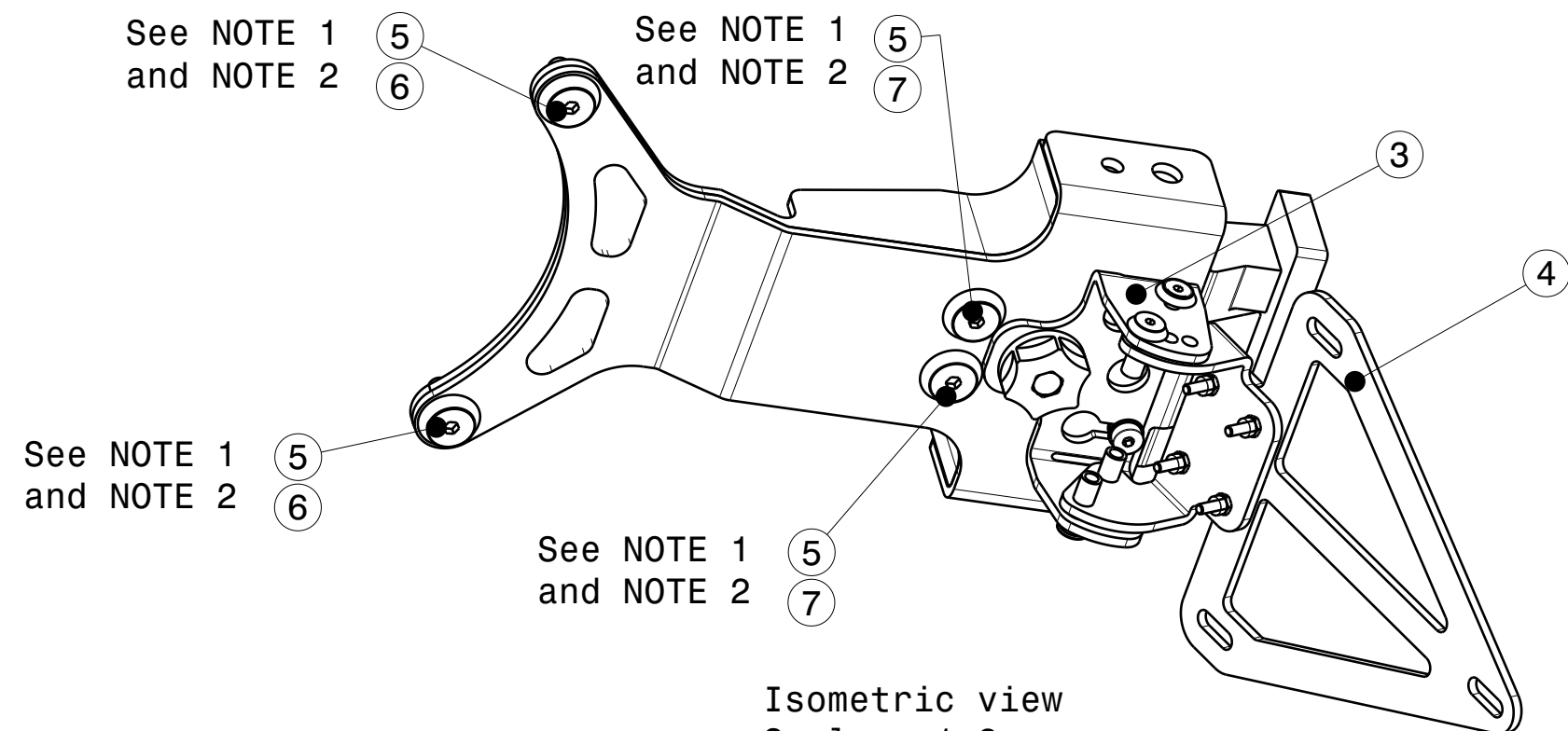


- NOTES:
- 1. To be tightened according to Aprilia Tuareg 660 Workshop Manual.
 - 2. Do not use Loctite or other thread locking compounds. Use copper grease.
 - 3. Blind nuts are pre-assembled in the Baseplate and in the Adjustment Bracket

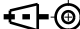


Isometric view
Scale: 1:2

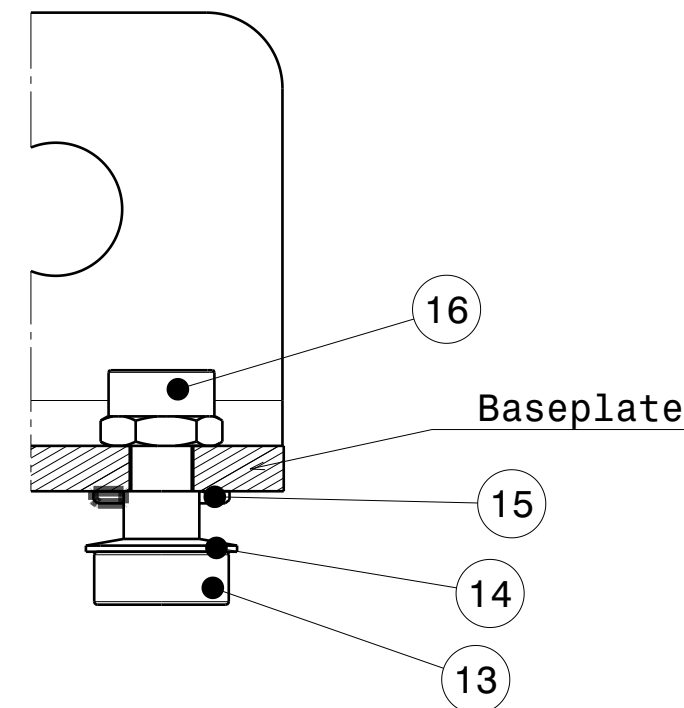
PART LIST			
Description	Part Number	F/N	Qty
Baseplate	FGWX-15-A-001	1	1
Harness compartment	FGWX-15-A-005	2	1
Adjustment Bracket	FGWX-15-A-002	3	1
CF Plate Bracket Holder	FGWX-15-B-003	4	1
Csk Washer M6		5	4
Csk Screw M6x20		6	2
Csk Screw M6x40		7	2
Knob M5x35		8	1
CF Plate Bracket	FGWX-15-B-004	9	1
Washer Ø5 large		10	1
Csk washer M4		11	4
Csk Screw M4x16		12	4
Shoulder Bolt M4		13	2
Spring Washer M5		14	2
Washer M4		15	2
Nut M4		16	2
Csk screw M3x16		17	4
Nut M3		18	4



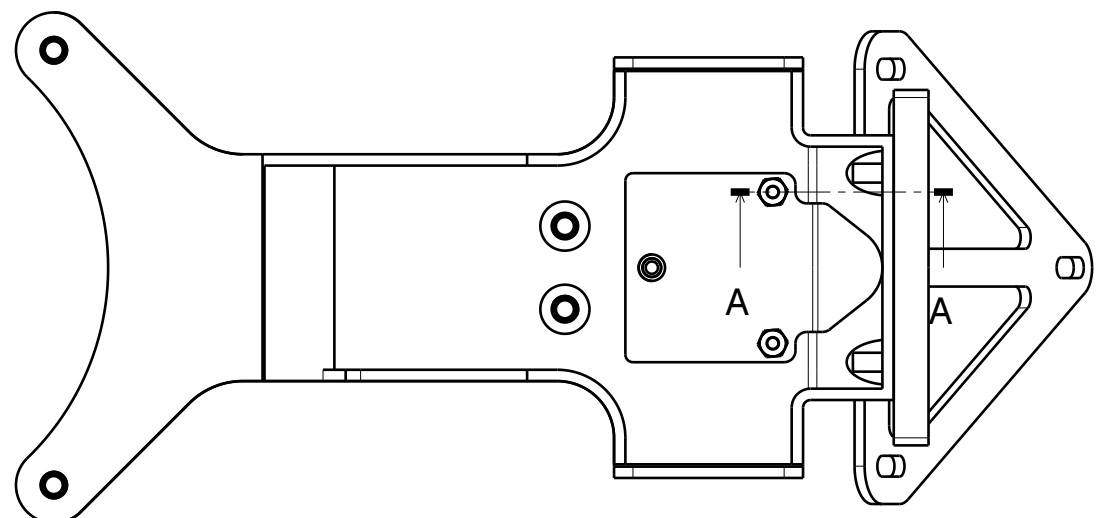
Isometric view
Scale: 1:2

SCALE 1:1		BREAK ALL EDGES (R ALT. 45°) 0.1-0.5 THREAD TOL.. 6g/6H ISO R96S/1 ALL DIM. INCLUDE SURFFACE TREATMENT		GWORX	
ROUGH Ra µm -	FILLET RADII -	DIM TOL -	ANG TOL -	PROJECTION 	
DATE -		DESCRIPTION Plate Holder - - -			
DESIGN GWORX					
DRAWN GWORX					
MAT. -			SURF. TREATMENT -		
SIZE -	DOC.NO. FGWX-15-A			REV. -	SHEET 1 OF 1

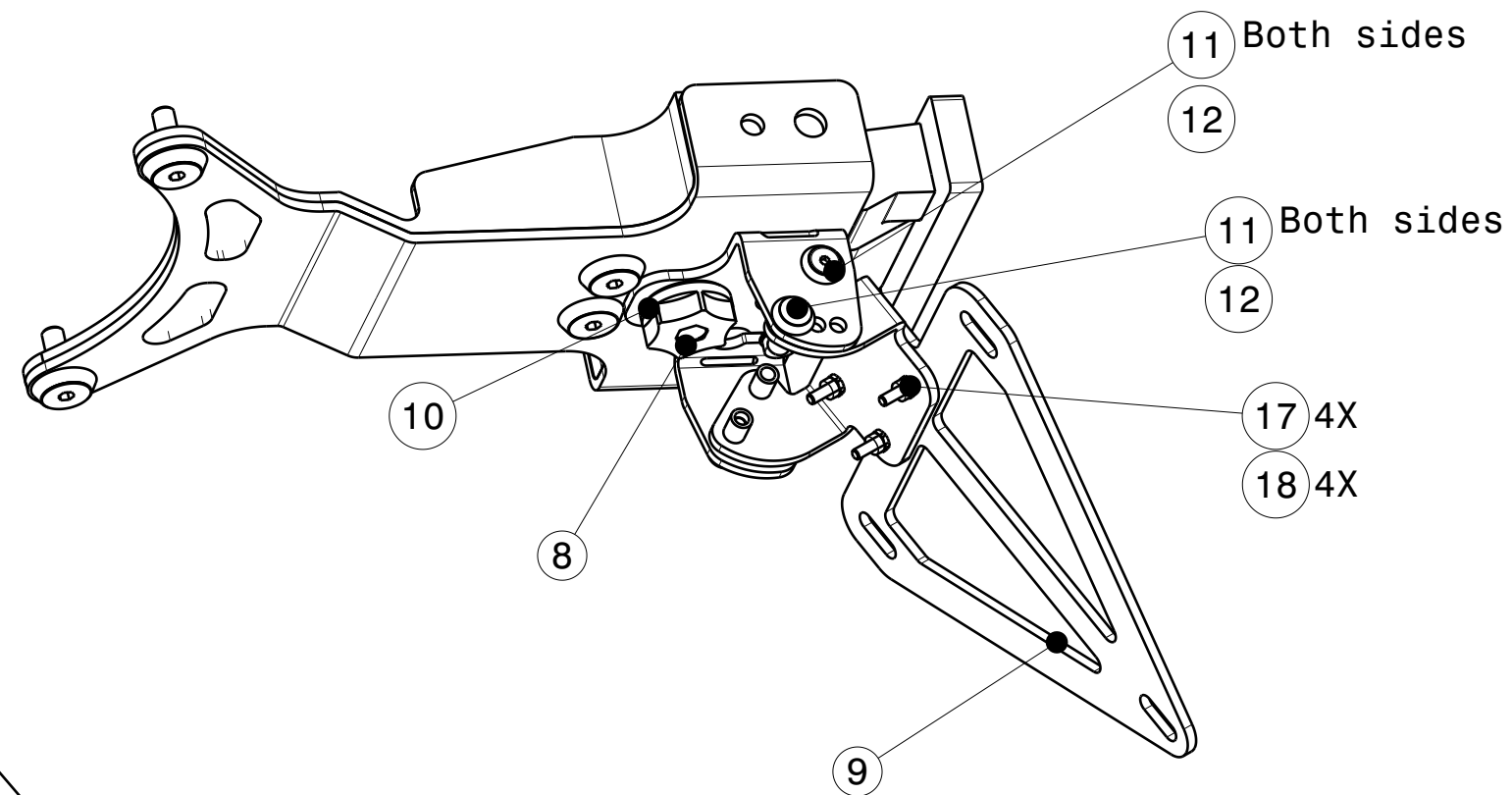
4. Pre-assemble the Adjustment Bracket and the Plate Bracket, using 2 washers and 2 screws per side, as shown.
5. Remove the blinking lights from the OEM Plate Holder and mount them on the Baseplate.
6. Pre-assemble the the 2x M4 shoulder bolts onto the Baseplate, with wahers and nuts, as shown in Section A-A.
7. Connect the blinking lights. Position the Harness compartment as shown, and mount the Baseplate onto the bikes' tail.
- Make sure that the wires don't get squeezed between parts.
8. Position the assembly from 4) using the shoulder bolts as guide, and insert the Knob, the washer and the screw as shown in Isometric view 2. Make sure that the spring washers stay in the position shown in Section A-A.
- 9) Adjust the angle of the Plate Bracked as desired.



Section view A-A
Scale: 2:1
(2 places)



Front view
Scale: 1:2



Isometric view
Scale: 1:2